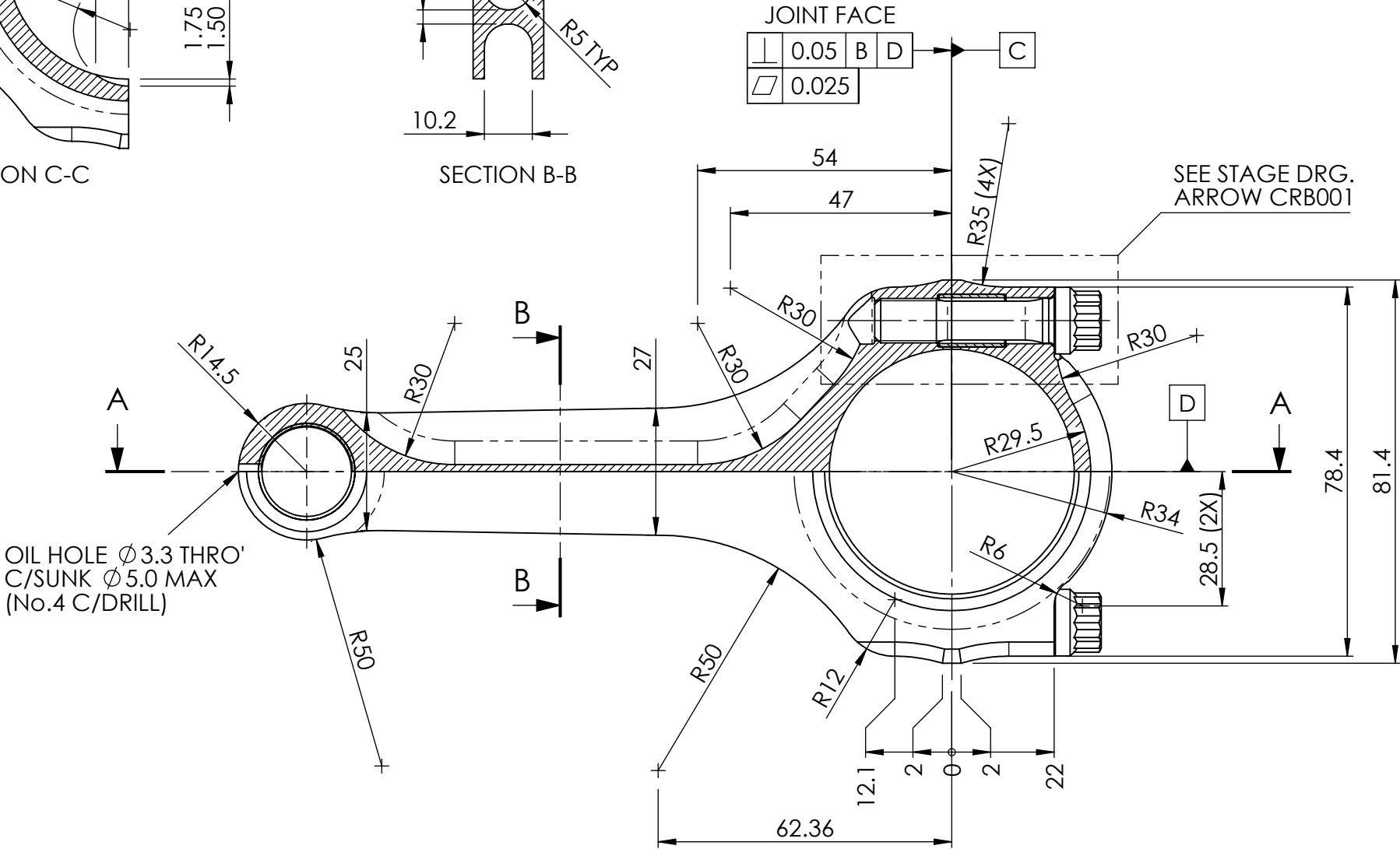
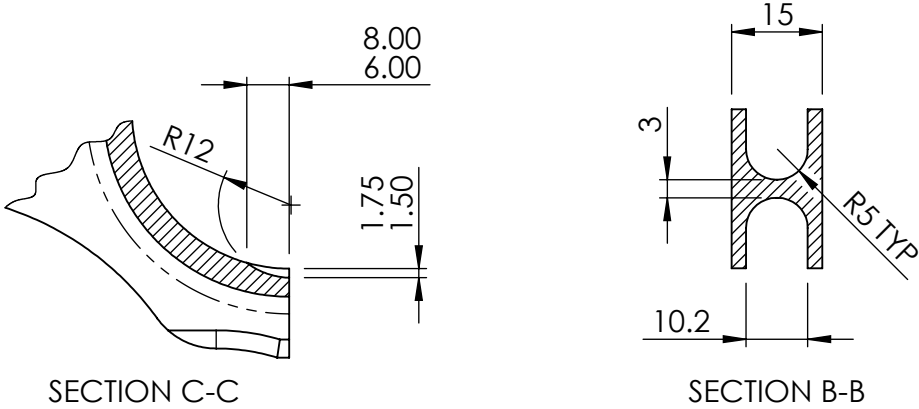
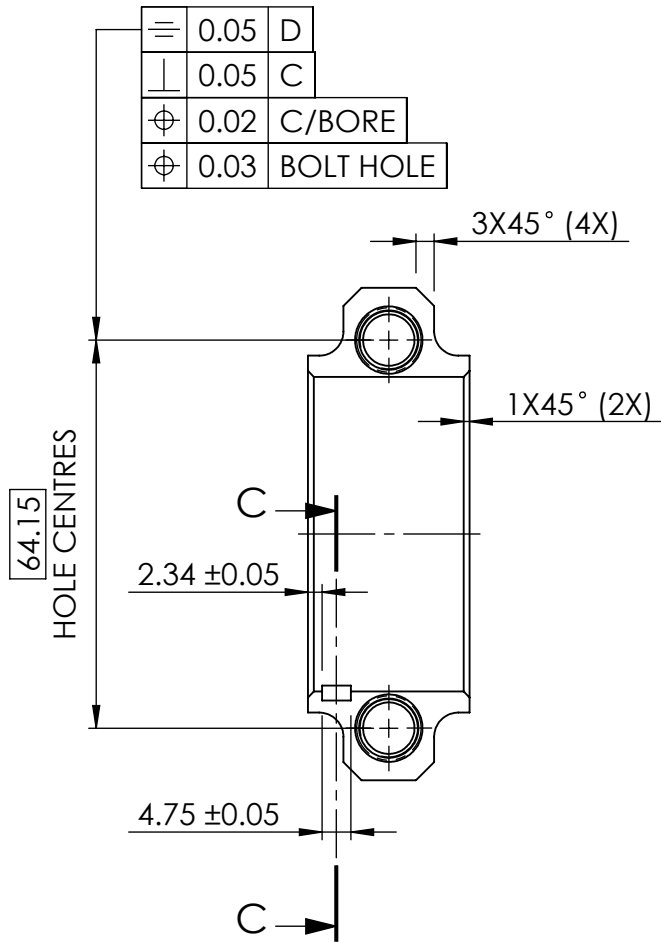


ARROW G159 (ISUZU BALLET)

THIS DRAWING IS CONFIDENTIAL
AND IS SUPPLIED ON THE EXPRESS
CONDITION THAT IT SHALL NOT BE
LOANED OR COPIED OR DISCLOSED
TO ANY OTHER PERSON OR USED
FOR ANY OTHER PURPOSE WITHOUT THE
WRITTEN CONSENT OF
ARROW PRECISION ENGINEERING

MATERIAL - EN24 X CONDITION (FORG 012)
S/E BUSH MATERIAL - ASTM-B411/C64700 (CuNiSi)
BOLT - 3/8 UNJF ARP2000 (4AJ1.500-2SU)
RING DOWEL - \varnothing 11.15 BY 14.0 LONG



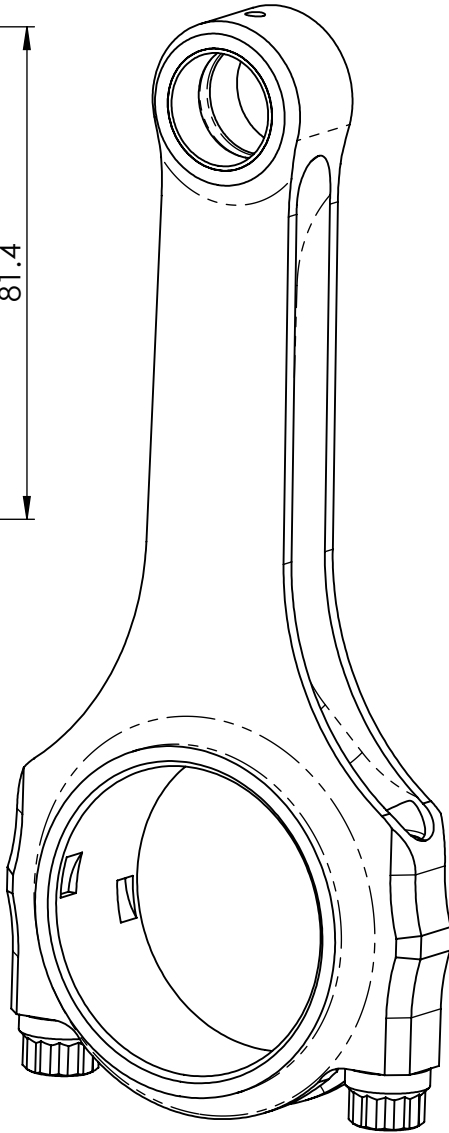
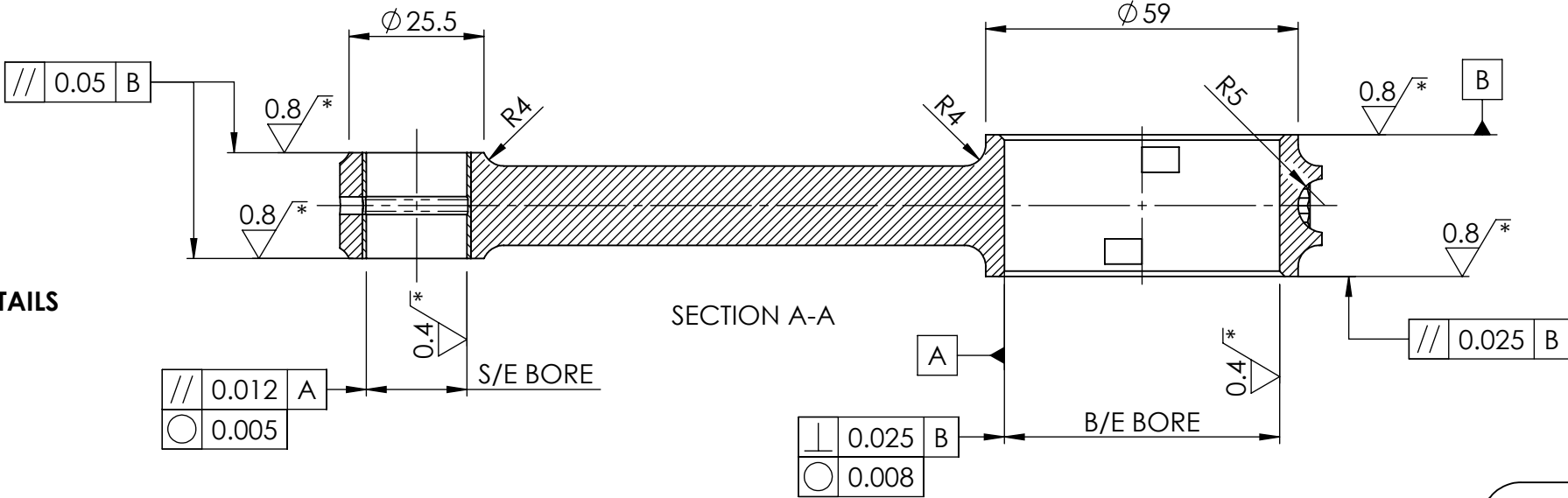
CALCULATED MASSES

| | |
|----------------|------|
| OVERALL: | 518g |
| ROTATING: | 379g |
| RECIPROCATING: | 139g |

ENGINE: 4 CYL

| | |
|---|-------|
| PISTON MASS (g): | TBC |
| G/PIN MASS (g): | TBC |
| RPM: | 8,000 |
| ROD CENTRES (mm): | 137.0 |
| STROKE (mm): | TBC |
| TENSILE LOAD IN ROD PRODUCED BY PISTON ACCN. @ MAX REVS = | |

TENSILE LOAD DETAILS
T.B.C.



1. CON ROD IS FULLY MACHINED
2. FEATURES MARKED '*' ARE TO BE MACHINED AFTER ASSEMBLY WITH FINAL ASSEMBLY BOLTS
3. SMEAR BOLT THREAD AND SEAT WITH ARP ASSEMBLY LUBRICANT BEFORE ASSEMBLY
4. GENERAL MACHINING TOLERANCE \pm 0.2
5. GENERAL SURFACE FINISH 6.3

ARROW G159 (ISUZU BALLET)

| | | | |
|---------------|-----------------------------|------------|-----------------------------|
| BOLT CENTRES: | 64.15 | B/E BORE: | \varnothing 52.000/52.015 |
| BUSH: | \varnothing 23.5 SEB001/G | S/E BORE: | \varnothing 19.020/19.030 |
| SHELLS: | STANDARD | CENTRES: | 136.975/137.025 |
| TYPE: | 3/8 H-SECTION | B/E THICK: | 26.725/26.775 |
| DRAWN: | D.CURRIE | S/E THICK: | 19.90/20.10 |

| | |
|----------|----------|
| ISSUE: | PR01 |
| CHECKED: | - |
| DATE: | 14-03-12 |

FOR DISCUSSION ONLY

